

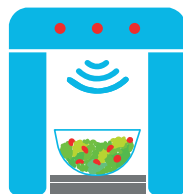


CEMBRE

MARKING SYSTEMS
DETECTABLE BY X-RAY AND METAL DETECTORS



SAFETY EVERYWHERE. ESPECIALLY IN THE PRODUCTION PROCESS



In some industrial sectors, such as food & beverage, pharmaceuticals and cosmetics, the production processes must guarantee very high levels of product

quality for the safety of the end user.

For this reason, each stage of production must be carefully controlled to prevent the finished product from being contaminated by foreign bodies.

CEMBRE METAL DETECTABLE TAGS

CEMBRE offers a range of tags and tag holders (**Metal Detectable, MD**) for industrial labelling, produced using a specific additive easily **detectable by metal detectors and X-rays**, which guarantees high resistance to oxidation. These tags are traced by the special equipment positioned along the production process in case of an accidental contamination.



MG4



MG4 THE NEW GENERATION THERMAL TRANSFER PRINTER FOR SHEET MEDIA

Markingenius®MG4 is an industrial labelling printer designed to offer **very high and long-lasting print quality**.

ALWAYS CONNECTED!

Connection to the company network via **USB, LAN** and also **Wi-Fi** or, in the absence of a network, to mobile and fixed devices via **Wi-Fi direct**.

ONE BATTERY, MANY TOOLS!



Power supply from the mains or using a rechargeable lithium ion battery, common to the CEMBRE 18V tools, means it can be used directly in front of the panel to be wired.

FLEXIBLE OPERATION!

Geniuspro Mobile APP

developed by CEMBRE for IOS and Android devices (smartphones and tablets) for the latest changes on site on the electrical panel or on board the machine.



Wi-Fi



USB



LAN



SHARE



APP



Wi-Fi
DIRECT



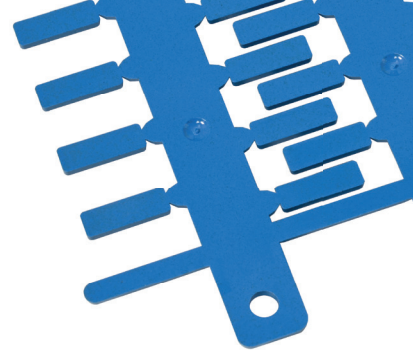
DISPLAY
TOUCH



STATUS
MONITOR



BATTERY
RECHARGEABLE



A TOOL THAT ENSURES COMPLIANCE WITH STANDARDS

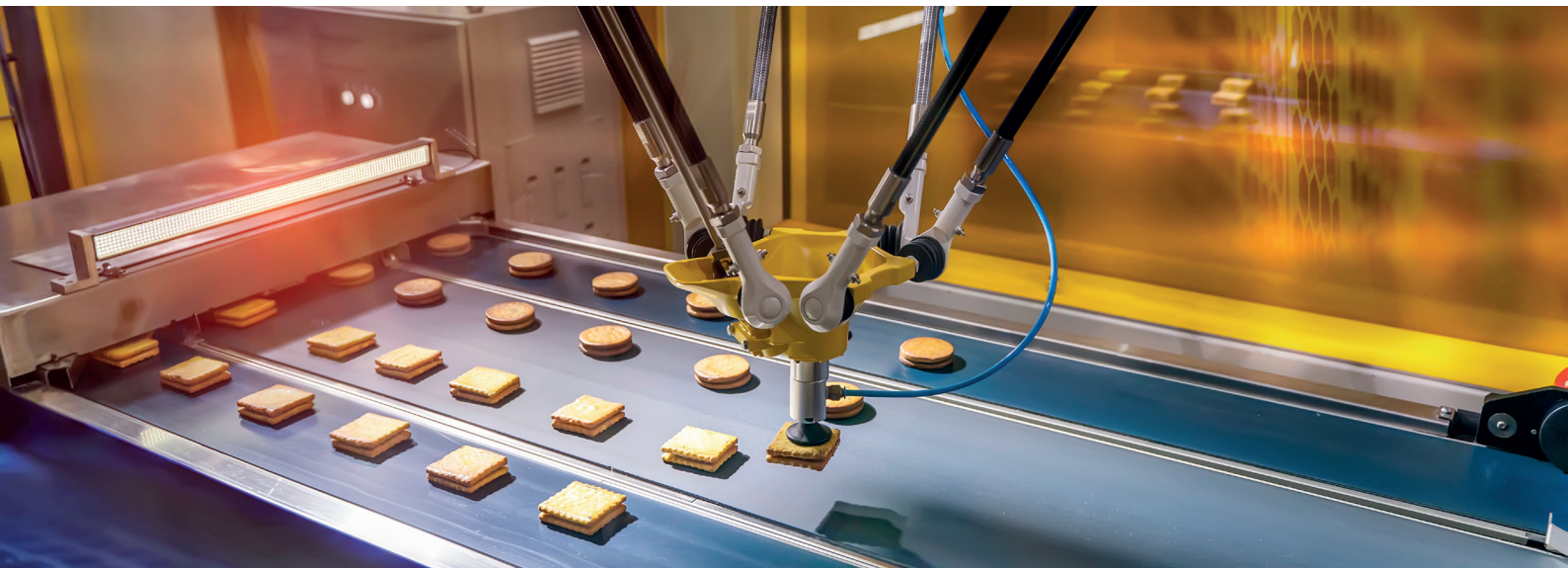
This solution adopted in the food, pharmaceuticals or cosmetic fields ensures the process is compliant with **HACCP** regulations. The compound from which the tags are made meets the EU 10/2011 and FDA requirements for food contact.

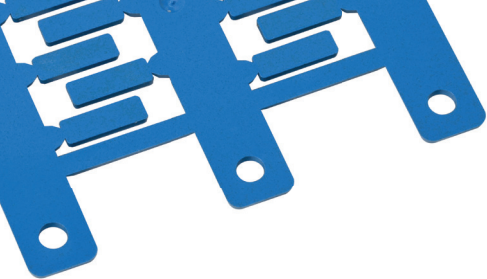


CABLE TAGS

Tags produced in metal detectable material, printable via thermal transfer printers, which can be inserted into transparent holders, used with cable ties or applied directly to the cable.

on sheet	type	size mm	used with
MG-TPM-MD	40060-MD	4x10	transparent tag holders PM
	40061-MD	4x12	
	40062-MD	4x15	
MG-TDM-01-MD	40160-MD	4x12	directly on the cable
MG-TDM-02-MD	40260-MD	4x12	
on roll	type	size mm	used with
ETF-ROLL-MD	43160	12x60	tie
	43168	20x30	





TERMINAL MARKER TAGS



Tags produced in metal detectable material, printable by thermal transfer printers which can be applied to third-party terminal blocks.

on sheet	type	size		used with
		mm	shape	
MG-CPM-01-MD	41062-MD	3x10	S	most widely used products
	41064-MD	5x7	S	
	41068-MD	5x10	M	
	41065-MD	6x10	M	
MG-CPM-02-MD	41160N-MD	5x10	S	
MG-CPM-03-MD	41261-MD	5x10	S	
	41263-MD	5x10	M	
MG-CPM-04-MD	41362-MD	3x10	S	
	41365-MD	5x10	M	
	41361-MD	6x10	M	
	41366-MD	8x10	M	
MG-CPM-05-MD	41460-MD	5x10	S	
MG-CPM-06-MD	41561-MD	5x10	S	
MG-CPM-07-MD	41661-MD	5x10	S	
MG-CPM-09-MD	41860-MD	5x10	MF	
MG-CPM-10-MD	46162-MD	5x12	S	
MG-CPM-11-MD	46362-MD	6x12	S	
MG-CPM-12-MD	46360-MD	4,2x9	MF	
MG-CPM-13-MD	41760-MD	5x12	M	
	41761-MD	6x12	M	
MG-CPM-15-MD	42608-MD	5x5	M	

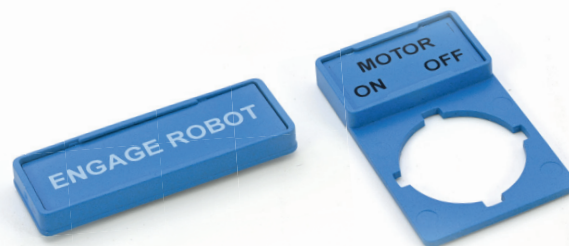
TAGS FOR BUTTONS AND COMPONENTS

Tags produced in metal detectable material, printable by thermal transfer printers which can be inserted into transparent holders.

on sheet	type	size mm	used with
MG-TAP-R-MD	37064-MD	15x27	legend bases
	37065-MD	15x49	

Push button holders suitable for 22.5 mm push buttons on third party models and panel tag holders for labelling other equipment components.

accessories	type	size mm	adhesive	rivetable
PTPS-22-MD	34062-MD	17x30		✓
PTPSA-22-MD	34662-MD	17x30	✓	
PLR-MD	34362-MD	17x30		✓
	34462-MD	17x52		✓
PLA-MD	35162N-MD	17x30	✓	
	35262N-MD	17x52	✓	



Cod. 6263015



www.cembre.com



CEMBRE S.p.A.
via Serenissima, 9
25135 Brescia
Italy
Ph +39 030 36921
ufficio.vendite@cembre.com
sales@cembre.com

CEMBRE Ltd.
Dunton Park,
Kingsbury Road,
Curdworth, Sutton Coldfield,
West Midlands, B76 9EB
United Kingdom
Ph +44 01675 470440
sales@cembre.co.uk

CEMBRE S.a.r.l.
22 Avenue Ferdinand
de Lesseps
91420 Morangis Cedex
France
Ph +33 01 60 49 11 90
info@cembre.fr

CEMBRE España S.L.U.
Calle Verano 4 y 8
Pl Las Monjas
28850 Torrejón de Ardoz
Madrid - Spain
Ph +34 91 4852580
comercial@cembre.es

CEMBRE GmbH
Geschäftsbereich
Energie- und Bahntechnik
Heidemannstr. 166
80939 München
Germany
Ph +49 89-3580676
info@cembre.de

CEMBRE GmbH
Geschäftsbereich
Industrie und Handel
Boschstraße 7
71384 Weinstadt
Germany
Ph +49 7151-20536-60
info-w@cembre.de

CEMBRE Inc.
Raritan Center Business Park
300 Columbus Circle-S.F.,
Edison, NJ 08837 USA
Ph +1 (732) 225-7415
sales.us@cembre.com
Midwest Office
1051 Perimeter Dr #470
Schaumburg, IL 60173

