



# CEMBRE

## NEW CABLE ENTRY SYSTEMS EWO SERIES 9000, 9200, 9210, 9220 AND 9230



**EWO**<sup>®</sup>  
EASY WIRE ORGANIZER

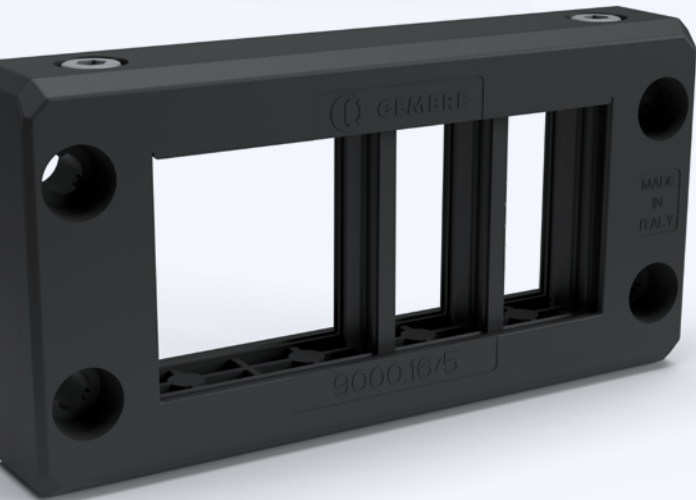
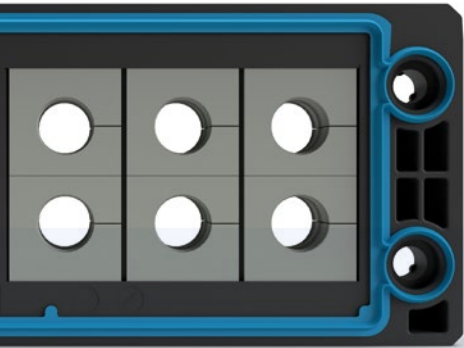


# CHOOSE CONVENIENCE AND SAFETY WITH EWO CABLE ENTRY SYSTEMS!

## SERIES 9000

- **Plug & Fix:** quick installation on predetermined cables for signal distribution, sensors, power supply
- **Easy to use:** frame can be fitted after laying the cables, which can also be secured with grommets in the final phase of machine wiring
- **For industrial automation:** ideal for applications in industrial automation, for cable management on machinery
- **Safety without compromise:** extremely safe and protected (IP66) even without an additional external seal
- **Grommets are perfectly enclosed by the frame,** with no protrusions, ensuring IP66 protection and cable sealing in accordance with EN62444

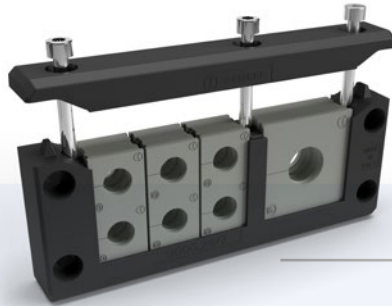




- **Slim and space-saving** thanks to the compact design and the absence of an external seal (available as an accessory)
- **Fast and flexible screw fastening:** anti-fall system for easier installation
- **Frame fixing system** using screws on nuts, deep-drawn holes or rivets
- **High quality material:** reinforced PA6.6 fibreglass frame with stainless steel screws and clamping nuts
- **180° of simplicity:** grommets can be mounted freely, without having to be locked in place, and without worrying about the direction of installation

## LOTS OF GREAT REASONS FOR CHOOSING EWO SERIES 9000

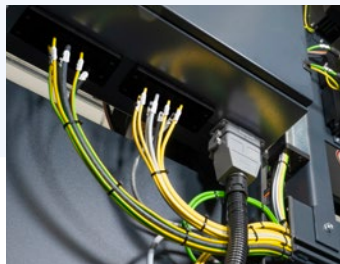
Frame can be fitted after laying the cables, which can also be secured with grommets in the final phase of machine wiring



Quick installation on predetermined cables for signal distribution, sensors, power supply



Ideal for applications in industrial automation, for cable management on the machine



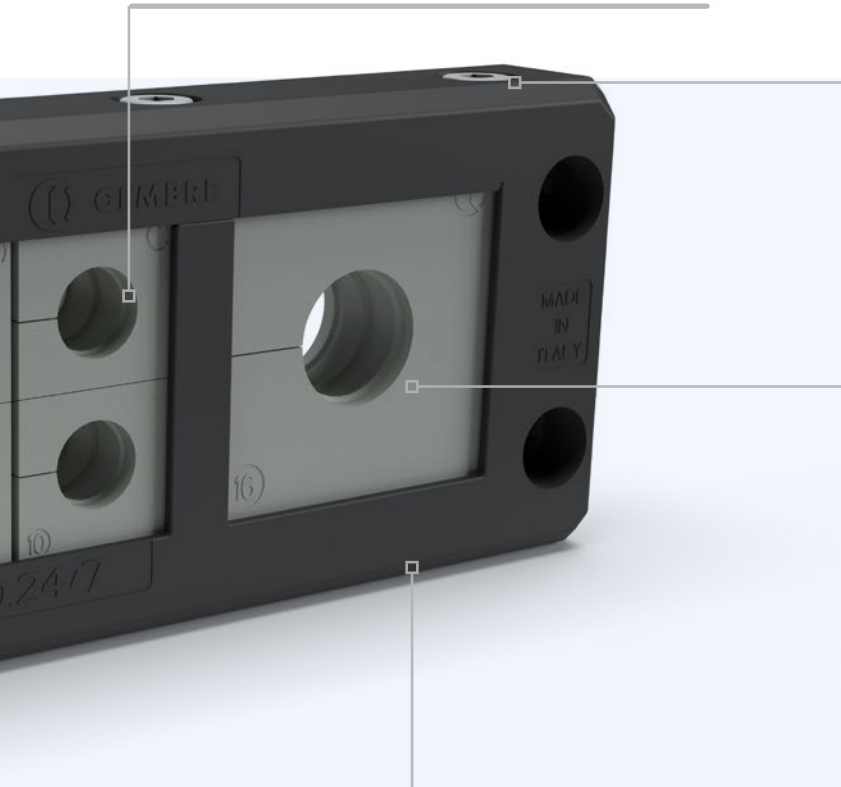
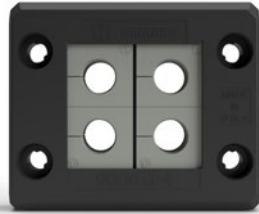
Extremely safe and protected (IP66) thanks to the special overmoulded seal which does not require an external seal



Slim and space-saving thanks to the compact design and the absence of an external seal.



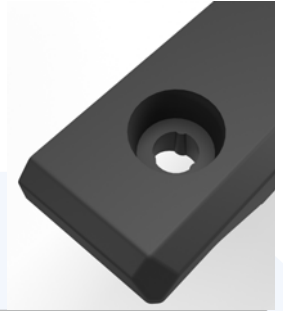
Grommets are perfectly enclosed by the frame, without protrusions, guaranteeing IP66 protection and cable sealing in accordance with EN62444



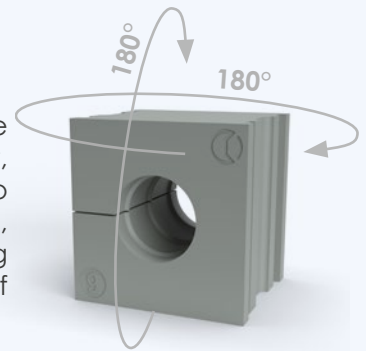
Reinforced PA6.6 frame  
fibreglass stainless steel screws and clamping nuts



Fast and flexible screw fastening: anti-fall system for easier installation



Grommets can be mounted freely, without having to be locked in place, and without worrying about the direction of installation



Frame fixing system using screws on nuts, deep-drawn holes or rivets



# THE CABLE ENTRY SYSTEM LINE SERIES 9000

Split cable entry systems for predetermined cables



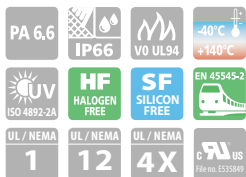
Cable entry mm	Metal Plate Perforation mm	No. grommets		SPLIT CABLE ENTRY SYSTEMS FOR PREDETERMINED CABLES						
		A	B	Square	Rectangular	Multilevel Rectangular	Reduced Rectangular	Round		
75 x 61	43 x 43	4	-	9000.Q/4	-	-	-	-	-	-
75 x 61	43 x 43	-	1	9000.Q/1	-	-	-	-	-	-
99,5 x 61	65 x 46	6	-	-	9000.10/6	-	-	-	-	-
99,5 x 61	65 x 46	2	1	-	9000.10/3	-	-	-	-	-
120 x 61	86 x 36/46	8	-	-	9000.16/8	-	-	-	-	-
120 x 61	86 x 36/46	4	1	-	9000.16/5	-	-	-	-	-
120 x 61	86 x 36/46	-	2	-	9000.16/2	-	-	-	-	-
147 x 61	112 x 36/46	10	-	-	9000.24/10	-	-	-	-	-
147 x 61	112 x 36/46	6	1	-	9000.24/7	-	-	-	-	-
147 x 61	112 x 36/46	2	2	-	9000.24/4	-	-	-	-	-
147 x 86	112 x 66	15	-	-	-	9000.24/15	-	-	-	-
75 x 42	43 x 24	2	-	-	-	-	9000.R/2	-	-	-
99,5 x 42	65 x 24	3	-	-	-	-	9000.R/3	-	-	-
120 x 42	86 x 24	4	-	-	-	-	9000.R/4	-	-	-
147 x 42	112 x 24	5	-	-	-	-	9000.R/5	-	-	-
50 x 45,5	Ø 20,5	1	-	-	-	-	-	9100.M20	9100.M20N	-
50 x 45,5	Ø 25,4	1	-	-	-	-	-	9100.M25	9100.M25N	-
50 x 45,5	Ø 32,5	1	-	-	-	-	-	9100.M32	9100.M32N	-
72 x 72	Ø 40,5	-	1	-	-	-	-	9100.M40	9100.M40N	-
72 x 72	Ø 50,5	-	1	-	-	-	-	9100.M50/1	9100.M50/1N	-
72 x 72	Ø 50,5	4	-	-	-	-	-	9100.M50/4	9100.M50/4N	-
72 x 72	Ø 64,0	-	1	-	-	-	-	9100.M63/1	9100.M63/1N	-
72 x 72	Ø 64,0	4	-	-	-	-	-	9100.M63/4	9100.M63/4N	-

Available colours:

- Black (RAL 9005) ■

Available colours:

- Grey (RAL 7035) ■
- Black (RAL 9005) ■



**Frame material:** Glass-fibre reinforced Polyamide PA6.6

**Light blue overmoulded seal material:** Thermoplastic elastomer (TPE)

**Frame fastening screws material:** Stainless steel (M5x55) Class A2

**Self-extinguishing class V0 (UL 94)**

**Temperature range:** -40°C to +140°C (static)

**Colour:** Black Ral 9005; Grey RAL 7035 (for round version)

**EWOWO**<sup>®</sup>  
EASY WIRE ORGANIZER

Grommets



Type A Grommet 20x20.6 mm	No. holes	Ø Cable mm	Type A Grommet 20x20.6 mm	No. holes	Ø Cable mm
9.AD0	0	-	9.A4D2	4	2-3
9.A1D1	1	1-2	9.A4D3	4	3-4
9.A1D2	1	2-3	9.A4D4	4	4-5
9.A1D3	1	3-4	9.A4D5	4	5-6
9.A1D4	1	4-5	9.A4D6	4	6-7
9.A1D5	1	5-6			
9.A1D6	1	6-7			
9.A1D7	1	7-8			
9.A1D8	1	8-9			
9.A1D9	1	9-10			
9.A1D10	1	10-11			
9.A1D11	1	11-12			
9.A1D12	1	12-13			
9.A1D13	1	13-14			
9.A1D14	1	14-15			
9.A1D15	1	15-16			
9.A1D16	1	16-16.5			
9.A1D17	1	16.5-17			



Type B Grommet 41x41 mm	No. holes	Ø Cable mm
9.BD0	0	-
9.B1D16	1	16-17
9.B1D17	1	17-18
9.B1D18	1	18-19
9.B1D19	1	19-20
9.B1D20	1	20-21
9.B1D21	1	21-22
9.B1D22	1	22-23
9.B1D23	1	23-24
9.B1D24	1	24-25
9.B1D25	1	25-26
9.B1D26	1	26-27
9.B1D27	1	27-28
9.B1D28	1	28-29
9.B1D29	1	29-30
9.B1D30	1	30-31
9.B1D31	1	31-32
9.B1D32	1	32-33
9.B1D33	1	33-34
9.B1D34	1	34-35

Type A Grommet 20x20.6 mm	No. holes	Ø Cable mm
9.A2D2	2	2-3
9.A2D3	2	3-4
9.A2D4	2	4-5
9.A2D5	2	5-6
9.A2D6	2	6-7



Type A Grommet 20x20.6 mm	No. holes	Ø Cable mm
9.A2D7	2	7-8
9.A2D8	2	8-9



Type B Grommet Adaptor	No. holes	Ø Cable mm
9.B-A	1	Depending on the type A used

Available colours:

- grey (RAL 7004)
- Black (RAL 9005)

Push-fit mounts

Push-fit mount	Dimensions mm	Metal Plate Perforation mm
9020.24	155 x 68	112 x 36/46
9020.16	128 x 68	86 x 36/46
9020.10	107 x 68	65 x 46
9020.Q	83 x 68	43 x 43



Blindplugs



Blindplugs	Ø Insert mm	Ø Head mm	L Insert mm
9005.D2	2	4	20
9005.D3	3	5	20
9005.D4	4	6	20
9005.D5	5	7	20
9005.D6	6	8	20
9005.D7	7	9	20
9005.D8	8	10	15
9005.D9	9	11	15
9005.D10	10	12	15
9005.D11	11	13	15
9005.D12	12	14	15
9005.D13	13	15	15
9005.D14	14	16	15
9005.D15	15	17	15
9005.D16	16	18	15
9005.D17	17	19	15

Split bushing



Split bushing	Pitch mm	Wrench mm
9110.M20*	M20x1.5	27
9110.M25*	M25x1.5	32
9110.M32*	M32x1.5	40
9110.M40*	M40x1.5	48
9110.M50*	M50x1.5	64
9110.M63N	M63x1.5	71

\*Add to Ref: N for Black

Intumescent gaskets



Type	For Cable gland Type	Dimensions mm
9007FR.Q	9000.Q	83 x 69
9007FR.10	9000.10	108 x 69
9007FR.16	9000.16	128 x 69
9007FR.24	9000.24	155 x 69
9007FR.R/2	9000.R/2	83 x 50
9007FR.R/3	9000.R/3	108 x 50
9007FR.R/4	9000.R/4	128 x 50
9007FR.R/5	9000.R/5	155 x 50

Closing plate with screws



Closing plate with screws	Dimensions mm	Metal Plate Perforation mm
9010.24	148.5 x 55.5	112 x 36/46
9010.16	121.5 x 55.5	86 x 36/46
9010.10	101.5 x 55.5	65 x 36/46
9010.Q	76.5 x 55.5	43 x 43

Closing plate with snap-on



Closing plate snap-on	Dimensions mm	Metal Plate Perforation mm
9010.24-SO	148.5 x 55.5	112 x 36/46
9010.16-SO	121.5 x 55.5	86 x 36/46
9010.10-SO	101.5 x 55.5	65 x 36/46
9010.Q-SO	76.5 x 55.5	43 x 43

External seal



External seal	For cable gland Type	Dimensions mm
9006.Q	9000.Q	72 x 60
9006.10	9000.10	98 x 60
9006.16	9000.16	118 x 60
9006.24	9000.24	145 x 60
9006.R/2	9000.R/2	72 x 41
9006.R/3	9000.R/3	98 x 41
9006.R/4	9000.R/4	118 x 41
9006.R/5	9000.R/5	145 x 41

Adhesive intumescent gaskets in rolls



Type	For Cable gland Type	Dimensions mm
9007FR/ROLL	9000.Q	5000x18x2,5
	9000.10	
	9000.16	
	9000.24	
	9000.R/2	
	9000.R/3	
	9000.R/4	
9000.R/5		

# BI-COMPONENT MEMBRANE CABLE ENTRIES SERIES 9200

Frame material in PP+GF, overmoulded material in silicone-free TPE elastomer, halogen-free, UL94, IP65, Colour Grey (RAL 7004)



“Preload Technology”



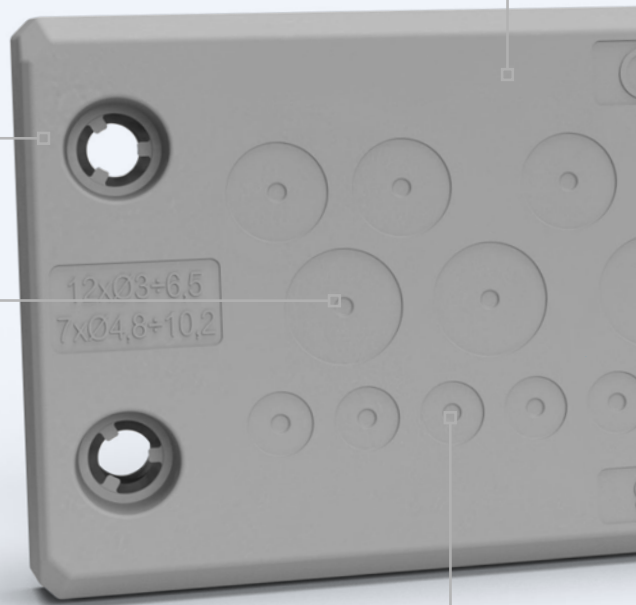
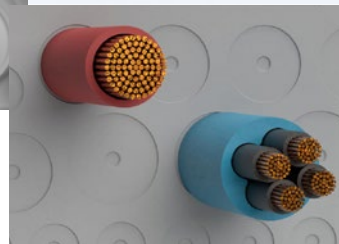
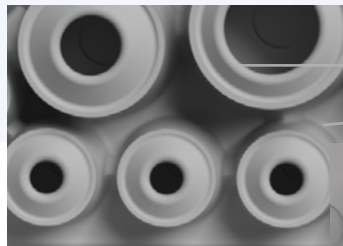
The slightly curved frame ensures uniform grip during installation

Centering system to facilitate controlled piercing of the membrane and easy insertion of the cable.

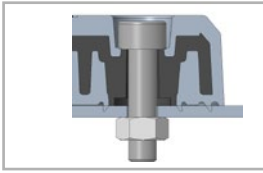


Double oriented sealing membrane.

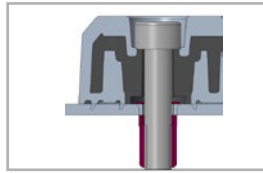
- facilitates cable insertion
- provides greater resistance to tearing



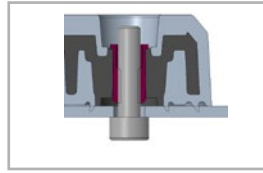
### 3 methods of fixing to the panel



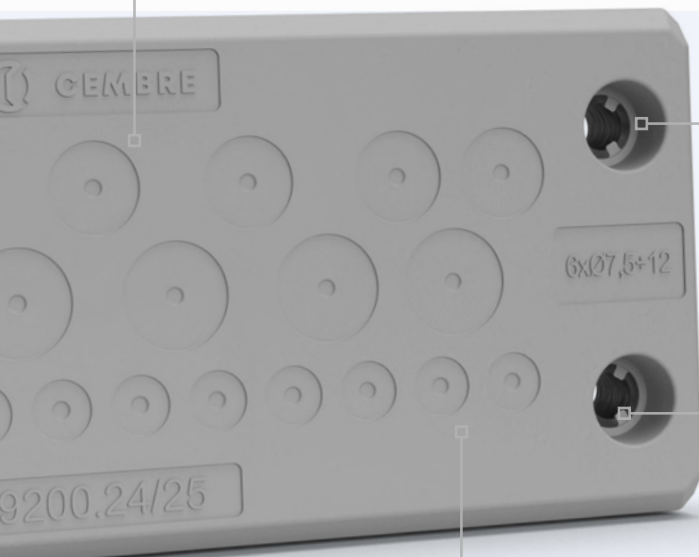
Through hole with lock nut



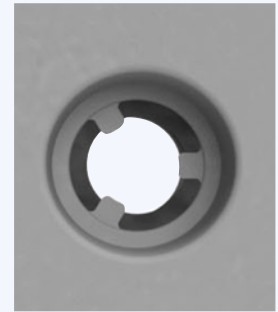
Threaded bushing on frame ensuring IP rating



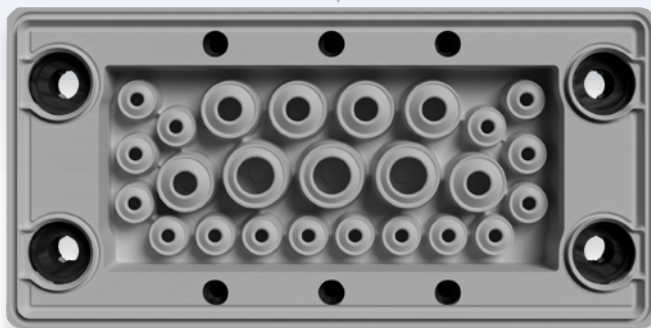
Threaded bushing on the membrane for fixing from the inside



Sealing collar to ensure IP rating under screw



Triple anti-fall screw system



Optimise the passage of unmarked cables thanks to the new double membrane system.

# BI-COMPONENT MEMBRANE CABLE ENTRIES SERIES 9200

**Structure material:** Polypropylene with black glass fibre

**Overmoulded membrane material:** Thermoplastic elastomer (TPE)

**Self-extinguishing cl. V0 (UL94)**

**Operating temperature range:** -40°C +100°C

**Colour:** grey RAL7004

**UL file number:** E535849

**Accessories upon request:** 9001.M5X20

stainless steel screws (M5x20) Class A2



**ASSEMBLY** with  
high tensile strength screws

**9200.Q**  
80x61x16



**9200.R5**  
150x38x16



Type	Cable configuration no. x Ø mm	Shape and Dimensions (length x height x thickness) mm	Metal plate perforation dimensions mm
9200.Q/13	8 x Ø 3÷6.5 mm 4 x Ø 4.8÷10.2 mm 1 x Ø 16÷22 mm	square <b>80x61x16</b>	43x43
9200.Q/16	9 x Ø 3÷6.5 mm 4 x Ø 4.8÷10.2 mm 2 x Ø 7.5÷12 mm 1 x Ø 9÷16.2 mm		
9200.Q/25	25 x Ø 3÷6.5 mm		
9200.R5/7	7 x Ø 7.5÷12 mm	reduced rectangular <b>150x38x16</b>	112x18/24
9200.R5/21	21 x Ø 3÷6.5 mm		

## BI-COMPONENT MEMBRANE CABLE ENTRIES SERIES 9200

**9200.10**  
103x61x16



**9200.16**  
123x61x16



Type	Cable configuration no. x Ø mm	Shape and Dimensions (length x height x thickness) mm	Metal plate perforation dimensions mm
9200.10/8	8 x Ø 7.5÷12 mm	rectangular, 10-pin <b>103x61x16</b>	65x36/46
9200.10/14	14 x Ø 4.8÷10.2 mm		
9200.10/15	5 x Ø 3÷6.5 mm 10 x Ø 4.8÷10.2 mm		
9200.10/16	9 x Ø 3÷6.5 mm 4 x Ø 4.8÷10.2 mm 3 x Ø 7.5÷12 mm		
9200.10/26	26 x Ø 3÷6.5 mm		
9200.16/11	11 x Ø 7.5÷12 mm	rectangular, 16-pin <b>123x61x16</b>	86x36/46
9200.16/14	5 x Ø 3÷6.5 mm 5 x Ø 4.8÷10.2 mm 4 x Ø 9÷16.2 mm		
9200.16/20	11 x Ø 3÷6.5 mm 5 x Ø 4.8÷10.2 mm 4 x Ø 7.5÷12 mm		
9200.16/25	16 x Ø 3÷6.5 mm 6 x Ø 4.8÷10.2 mm 3 x Ø 7.5÷12 mm		
9200.16/34	34 x Ø 3÷6.5 mm		

**9200.24**  
 150x61x16


Type	Cable configuration no. x Ø mm	Shape and Dimensions (length x height x thickness) mm	Metal plate perforation dimensions mm
<b>9200.24/14</b>	10 x Ø 3÷6.5 mm 4 x Ø 16÷22 mm	rectangular, 24-pin <b>150x61x16</b>	112x36/46
<b>9200.24/15</b>	15 x Ø 7.5÷12 mm		
<b>9200.24/20</b>	8 x Ø 3÷6.5 mm 6 x Ø 4.8÷10.2 mm 2 x Ø 7.5÷12 mm 4 x Ø 9÷16.2 mm		
<b>9200.24/22</b>	6 x Ø 3÷6.5 mm 6 x Ø 4.8÷10.2 mm 10 x Ø 7.5÷12 mm		
<b>9200.24/24</b>	6 x Ø 3÷6.5 mm 16 x Ø 4.8÷10.2 mm 2 x Ø 7.5÷12 mm		
<b>9200.24/25</b>	12 x Ø 3÷6.5 mm 7 x Ø 4.8÷10.2 mm 6 x Ø 7.5÷12 mm		
<b>9200.24/26</b>	26 x Ø 4.8÷10.2 mm		
<b>9200.24/32</b>	21 x Ø 3÷6.5 mm 8 x Ø 4.8÷10.2 mm 3 x Ø 7.5÷12 mm		
<b>9200.24/42</b>	42 x Ø 3÷6.5 mm		

# BI-COMPONENT MEMBRANE CIRCULAR CABLE ENTRIES SERIES 9210.M

**Structure material:** Polypropylene with black glass fibre

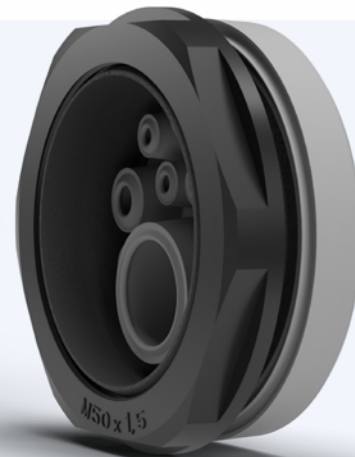
**Overmoulded membrane material:** Thermoplastic elastomer (TPE)

**Self-extinguishing cl. V0 (UL94)**

**Operating temperature range:** -40°C +100°C

**Colour:** grey RAL7004

**UL file number:** \*Pending



**ASSEMBLY WITH LOCKNUTS**  
for high tensile strength

**9210.M32**  
 Ø44

**9210.M40**  
 Ø52

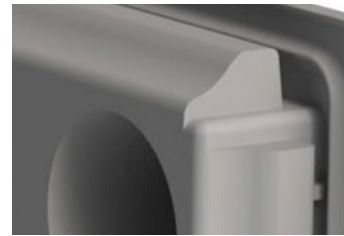
**9210.M50**  
 Ø62

**9210.M63**  
 Ø75


Type	Cable configuration no. x Ø mm	Shape and Dimensions Ø mm	Metal plate perforation dimensions Ø mm
9210.M32/4	3 x Ø 3÷6.5 mm 1 x Ø 7.5÷12 mm	round Ø44	32.5
9210.M32/4-2	4 x Ø 5÷9.5 mm		
9210.M32/7	7 x Ø 3÷6.5 mm		
9210.M40/8	4 x Ø 3÷6.5 mm 4 x Ø 4.8÷10.2 mm	round Ø52	40.5
9210.M50/8	5 x Ø 4.8÷10.2 mm 3 x Ø 7.5÷12 mm	round Ø62	50.5
9210.M50/10	7 x Ø 3÷6.5 mm 2 x Ø 4.8÷10.2 mm 1 x Ø 16÷22 mm		
9210.M50/12	4 x Ø 3÷6.5 mm 8 x Ø 4.8÷10.2 mm		
9210.M50/19	19 x Ø 3÷6.5 mm		
9210.M63/9	1 x Ø 3÷6.5 mm 3 x Ø 4.8÷10.2 mm 4 x Ø 9÷16.2 mm 1 x Ø 16÷22 mm	round Ø75	64.0
9210.M63/13	4 x Ø 3÷6.5 mm 4 x Ø 4.8÷10.2 mm 5 x Ø 9÷16.2 mm		
9210.M63/14	14 x Ø 4.8÷10.2 mm		
9210.M63/35	35 x Ø 3÷6.5 mm		

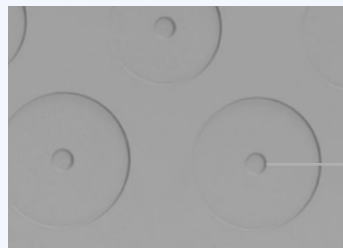
# RUBBER MEMBRANE CABLE ENTRIES SERIES 9220 TYPE A AND TYPE B

Silicone-free TPE elastomer material, halogen-free, UL94, IP64, Colour Grey (RAL 7004)

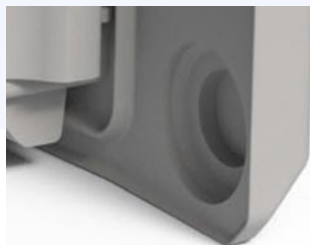


Symmetrical profile to avoid mounting constraints

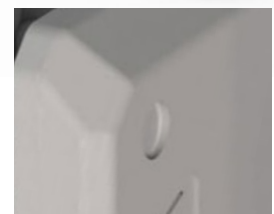
Centring system to facilitate controlled piercing of the membrane and ease insertion of the cable.



internal chamfers to accommodate the heads of any threaded inserts.



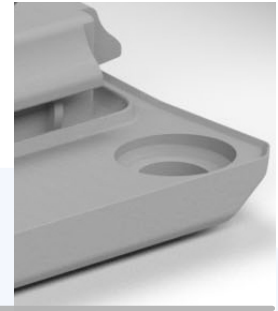
Possibility of drilling the membrane for the passage of any M5 screws.



Chamfered for easy insertion



Double seal profile to improve the IP protection rating (solids + water).



Internal 'slide' graft shape along the entire perimeter to facilitate insertion into the sheet metal hole.



Sloping side flaps to cover any holes and ensure greater adhesion to the wall after the membrane has been inserted.



Two versions, suitable for different sheet thicknesses:

Type **A**, from 1.5 to 2.5 mm

Type **B**, from 2.8 to 4 mm



# RUBBER MEMBRANE CABLE ENTRIES SERIES 9220 TYPE A AND TYPE B

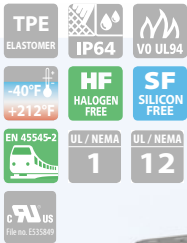
**Membrane material:** Thermoplastic elastomer (TPE)

**Self-extinguishing cl. V0 (UL94)**

**Operating temperature range:** -40°C +100°C

**Colour:** grey RAL7004

**UL file number:** E535849



TYPE A

TYPE B

MANUAL RECESSED MOUNTING

Type	Cable configuration no. x Ø mm	Shape and Dimensions (length x height x thickness) mm	Metal plate perforation dimensions mm	
9220.24/12A	12 x Ø 1÷15 mm	<p>rectangular 24-pin, with cut-out for sheet thicknesses of 1.5 to 2.5 mm <b>TYPE A</b> <b>142x44x13</b></p>	112x36	
9220.24/14A	14 x Ø 1÷12.5 mm			
9220.24/17A	12 x Ø 1÷13 mm 5 x Ø 1÷10 mm			
9220.24/18A	4 x Ø 1 ÷ 16 mm 5 x Ø 1 ÷ 12.5 mm 5 x Ø 1 ÷ 11 mm 4 x Ø 1 ÷ 6.5 mm			
9220.24/19A	7 x Ø 1÷13 mm 12 x Ø 1÷7 mm			
9220.24/26A	4 x Ø 1 ÷ 16 mm 4 x Ø 1 ÷ 12 mm 16 x Ø 1 ÷ 6.5 mm 2 x ASI			
9220.24/42A	12 x Ø 1 ÷ 7.5 mm 17 x Ø 1 ÷ 6.5 mm 12 x Ø 1 ÷ 5 mm 1 x Ø 1 ÷ 4.5 mm			
9220.24/48A	48 x Ø 1 ÷ 6.5 mm			
9220.24/50A	8 x Ø 1 ÷ 9.5 mm 9 x Ø 1 ÷ 6.5 mm 33 x Ø 1 ÷ 5 mm			
9220.24/12B	12 x Ø 1÷15 mm			<p>rectangular 24-pin, with cut-out for sheet thicknesses of 2.8 to 4 mm <b>TYPE B</b> <b>142x44x13</b></p>
9220.24/14B	14 x Ø 1÷12.5 mm			
9220.24/17B	12 x Ø 1÷13 mm 5 x Ø 1÷10 mm			
9220.24/18B	4 x Ø 1 ÷ 16 mm 5 x Ø 1 ÷ 12.5 mm 5 x Ø 1 ÷ 11 mm 4 x Ø 1 ÷ 6.5 mm			
9220.24/19B	7 x Ø 1÷13 mm 12 x Ø 1÷7 mm			
9220.24/26B	4 x Ø 1 ÷ 16 mm 4 x Ø 1 ÷ 12 mm 16 x Ø 1 ÷ 6.5 mm 2 x ASI			
9220.24/42B	12 x Ø 1 ÷ 7.5 mm 17 x Ø 1 ÷ 6.5 mm 12 x Ø 1 ÷ 5 mm 1 x Ø 1 ÷ 4.5 mm			
9220.24/48B	48 x Ø 1 ÷ 6.5 mm			
9220.24/50B	8 x Ø 1 ÷ 9.5 mm 9 x Ø 1 ÷ 6.5 mm 33 x Ø 1 ÷ 5 mm			

## RUBBER MEMBRANE CIRCULAR CABLE ENTRIES SERIES 9230.D

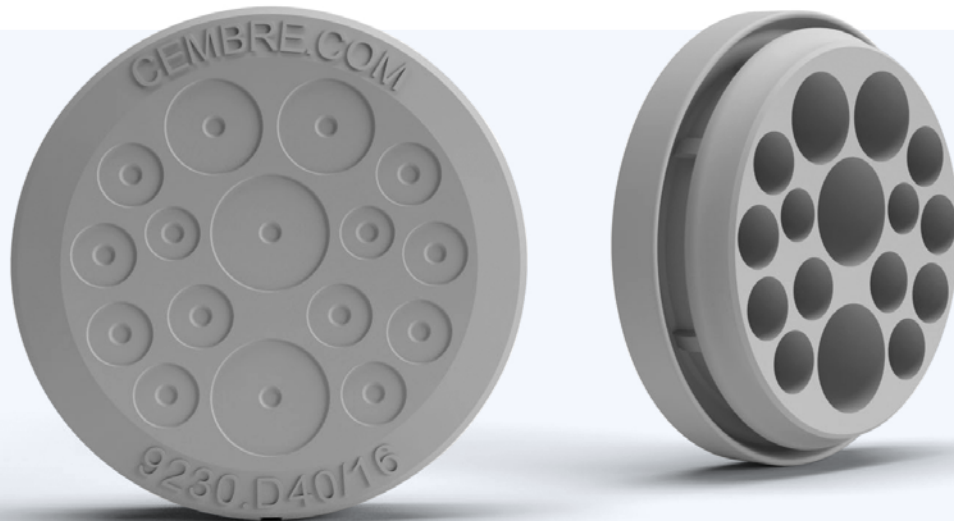
**Membrane material:** Thermoplastic elastomer (TPE)

**Self-extinguishing cl. V0 (UL94)**

**Operating temperature range:** -40°C +100°C

**Colour:** grey RAL7004

**UL file number:** \*Pending



MANUAL RECESSED MOUNTING

**9230.D25**  
Ø33.5



**9230.D32**  
Ø40.5



Type	Cable configuration no.x Ø mm	Shape and Dimensions Ø mm	Metal plate perforation dimensions Ø mm
<b>9230.D25/4</b>	4 x Ø 1 ÷ 8 mm	round <b>Ø33.5</b>	24.5
<b>9230.D25/6</b>	4 x Ø 1 ÷ 5.3 mm 2 x Ø 1 ÷ 9.5 mm		
<b>9230.D25/7</b>	7 x Ø 1 ÷ 5.5 mm		
<b>9230.D32/7</b>	7 x Ø 1 ÷ 8 mm	round <b>Ø40.5</b>	32.5
<b>9230.D32/10</b>	6 x Ø 1 ÷ 5.3 mm 2 x Ø 1 ÷ 6.5 mm 2 x Ø 1 ÷ 9.5 mm		
<b>9230.D32/10-2</b>	10 x Ø 1 ÷ 6.3 mm		
<b>9230.D32/11</b>	9 x Ø 1 ÷ 5.3 mm 2 x Ø 1 ÷ 8 mm		
<b>9230.D32/13</b>	13 x Ø 1 ÷ 5.3 mm		

## RUBBER MEMBRANE CIRCULAR CABLE ENTRIES SERIES 9230.D

**9230.D40**  
Ø48.5

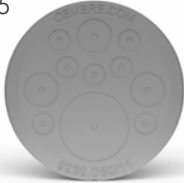


**9230.D50**  
Ø58.5



Type	Cable configuration no.x Ø mm	Shape and Dimensions Ø mm	Metal plate perforation dimensions Ø mm
<b>9230.D40/9</b>	8 x Ø 1 ÷ 9.3 mm 1 x Ø 1 ÷ 11.5 mm	round <b>Ø48.5</b>	40.5
<b>9230.D40/16</b>	2 x Ø 1 ÷ 5.3 mm 10 x Ø 1 ÷ 6.3 mm 2 x Ø 1 ÷ 9.3 mm 2 x Ø 1 ÷ 11.2 mm		
<b>9230.D40/17</b>	1 x Ø 1 ÷ 4 mm 16 x Ø 1 ÷ 7.2 mm		
<b>9230.D50/9</b>	5 x Ø 1 ÷ 7 mm 4 x Ø 1 ÷ 18 mm	round <b>Ø58.5</b>	50.5
<b>9230.D50/11</b>	7 x Ø 1 ÷ 7.2 mm 3 x Ø 1 ÷ 11.2 mm 1 x Ø 1 ÷ 22.5 mm		
<b>9230.D50/12</b>	10 x Ø 1 ÷ 9.3 mm 2 x Ø 1 ÷ 11.2 mm		
<b>9230.D50/16</b>	4 x Ø 1 ÷ 5.3 mm 5 x Ø 1 ÷ 6.5 mm 3 x Ø 1 ÷ 9.5 mm 4 x Ø 1 ÷ 11.5 mm		

**9230.D50**  
 Ø58.5



Type	Cable configuration no.x Ø mm	Shape and Dimensions Ø mm	Metal plate perforation dimensions Ø mm
<b>9230.D50/18</b>	2 x Ø 1 ÷ 4 mm 2 x Ø 1 ÷ 6 mm 4 x Ø 1 ÷ 7 mm 5 x Ø 1 ÷ 9,5 mm 5 x Ø 1 ÷ 12 mm	round <b>Ø58.5</b>	50.5
<b>9230.D50/20</b>	16 x Ø 1 ÷ 6.5 mm 4 x Ø 1 ÷ 9.5 mm		
<b>9230.D50/35</b>	35 x Ø 1 ÷ 5.3 mm		

## B-FL750ND AND EWO

### THE INTEGRATED SOLUTION FOR SUPERIOR ELECTRICAL INSTALLATIONS!

An example of this philosophy is the **integrated B-FL750ND and EWO system**, a solution that offers a continuous and uninterrupted workflow, from the drilling process to the installation of the cable entry systems.

The **B-FL750ND cordless hydraulic punching tool** is a powerful and versatile tool, designed to easily punch holes in **panels, electrical cabinets** and **other surfaces** made of **stainless steel, fibreglass** and **plastic**.

This combination of tools and components allows you to **speed up** operations and increase the reliability of the entire system.

The **ease of use** and **total compatibility** between the two products offer a decisive advantage in contexts where speed and precision are crucial.



## B-FL750ND AND EWO

### THE ADVANTAGES OF THE INTEGRATED SYSTEM



- **Total compatibility:** the B-FL750ND is designed to make perfect holes for the installation of EWO cable entry systems, reducing operating time and improving precision in every phase of the installation.
- **Practicality and Versatility:** Thanks to its ability to drill through different materials and adapt to multiple needs, the B-FL750ND allows you to make holes for the installation of cable entry systems quickly and safely.
- **Reliability and Protection:** EWO cable entry systems are designed to guarantee advanced protection against dust and water, increasing the life of the electrical system. This improved protection reduces the need for maintenance and contributes to the long-term safety of the system.



# B-FL750ND AND EWO

## PUNCHING ACCESSORIES AVAILABLE

### Round punch

Hole diameter				Material max thickness (mm)		Pilot hole Ø (mm)	Type		Application Cable Entry Frames	
Nominal		Pg	ISO	GAS	Stainless Steel		Mild Steel	KIT (Punch + Die)	Puller	Type
Ø (mm)	Ø (inch)					Type				
20,5	.807	Pg 13,5	ISO-20	-	2,5 mm (0.1 in.) Rm= 700 N/mm <sup>2</sup>	3,5 mm (0.14 in.) Rm= 510 N/mm <sup>2</sup>	11,5	RD20.5SS	TD-11	9100.M20
25,4	1.000	-	ISO-25	-				RD25.4SS		9100.M25; 9230.D25
32,5	1.279	-	ISO-32	-			20,0	RD32.5SS	TD-19	9100.M32; 9210.M32; 9230.D32
40,5	1.594	-	ISO-40	-				RD40.5SS		9100.M40; 9210.M40; 9230.D40
50,5	1.988	-	ISO-50	-				RD50.5SS		9100.M50; 9210.M50; 9230.D50
64,0	2.520	-	ISO-63	-				RD64SS		9100.M63; 9210.M63

### Square punch

Hole diameter		Material max thickness (mm)		Pilot hole Ø (mm)	Type	Application Cable Entry Frames
Nominal		Stainless Steel	Mild Steel		KIT (Punch+die + Puller)	Type
(mm)	(inch)			Type		
43,0 X 43,0	1.693 x 1.693	1,5	2,0	26,5	RD43X43	9000.Q; 9200.Q

Stainless Steel = Rm= 700 N/mm<sup>2</sup> - Mild Steel = Rm= 510 N/mm<sup>2</sup>

## Rectangular punch

Hole diameter		Material max thickness (mm)		Pilot hole Ø (mm)	Type	Application Cable Entry Frames	
Nominal		Stainless Steel	Mild Steel		KIT (Punch+die + Puller)	Type	
(mm)	(inch)						
24,0 x 43,0	.945 x 1.693	2,0	2,0	16,5	RD24X43	9000.R/2	
24,0 x 65,0	.945 x 2.559				RD24x65	9000.R/3	
24,0 x 86,0	.945 x 3.386				RD24X86	9000.R/4	
24,0 x 112,0	.945 x 4.409				RD24X112	9000.R/5; 9200.R5	
36,0 x 65,0	1.417 x 2.559	1,5		2,0	26,5	RD36X65	9000.10
36,0 x 86,0	1.417 x 3.386					RD36X86	9000.16
36,0 x 112,0	1.417 x 4.409					RD36X112	9000.24; 9200.24; 9220.24
46,0 x 65,0	1.811 x 2.559					RD46X65	9000.10
46,0 x 86,0	1811 x 3.386	1,5	2,0		26,5	RD46X86	9000.16
46,0 x 112,0	1.811 x 4.409					RD46X112	9000.24; 9200.24

Stainless Steel = Rm= 700 N/mm<sup>2</sup> - Mild Steel = Rm= 510 N/mm<sup>2</sup>



Cod. 6263091



[www.cembre.com](http://www.cembre.com)



**CEMBRE S.p.A.**

via Serenissima, 9  
25135 Brescia  
Italy  
Ph +39 030 36921  
[ufficio.vendite@cembre.com](mailto:ufficio.vendite@cembre.com)  
[sales@cembre.com](mailto:sales@cembre.com)

**CEMBRE, S.L.U**

Calle Verano 6 y 8  
Pl Las Monjas  
28850 Torrejón de Ardoz  
Madrid  
Spain  
Ph +34 91 4852580  
[comercial@cembre.es](mailto:comercial@cembre.es)

**CEMBRE Ltd.**

Dunton Park,  
Kingsbury Road  
Curdworth,  
Sutton Colfield  
West Midlands, B76 9EB  
United Kingdom  
Ph +44 01675 470440  
[sales@cembre.co.uk](mailto:sales@cembre.co.uk)

**CEMBRE IE**

Unit 9, Airport Trade Park  
Santry, co.  
Dublin  
Ireland  
[sales@cembre.ie](mailto:sales@cembre.ie)

**CEMBRE S.A.R.L.**

Tour Part-Dieu  
129 rue Servient  
69003 Lyon  
France  
Tel +33 04 20 93 01 70  
[info@cembre.fr](mailto:info@cembre.fr)

**CEMBRE, INC.**

Raritan Center Business Park  
300 Columbus Circle-Suite F,  
Edison, NJ 08837 USA  
Ph +1 (732) 225-7415  
[sales.us@cembre.com](mailto:sales.us@cembre.com)

**CEMBRE B.V.**

Luchthavenweg 53  
5657EA Eindhoven  
The Netherlands  
Ph +31 (0) 40 311 1937  
[info@cembre.nl](mailto:info@cembre.nl)

**Cembre Electrical  
Connections Shanghai Limited**  
Room 2111,  
Jin Hang Mansion, NO.83  
Wan Hang Du Road  
Jing An District  
Shanghai  
Ph +86-2160195778  
[info@cembre.cn](mailto:info@cembre.cn)  
[sales@cembre.cn](mailto:sales@cembre.cn)

**CEMBRE GmbH**

Geschäftsbereich  
Energie- und Bahntechnik  
Heidemännstr. 166  
80939 München - Germany  
Ph + 49 89-3580676  
[info@cembre.de](mailto:info@cembre.de)

Geschäftsbereich  
Industrie und Handel  
Boschstraße 7  
71384 Weinstadt - Germany  
Ph +49 7151-20536-60  
[info-w@cembre.de](mailto:info-w@cembre.de)

