

ELECTRICAL CONNECTION SYSTEMS TO RAILS **CCV120R-60**

and track equipment

Connectors for electrical connection, on cast manganese steel crossover.



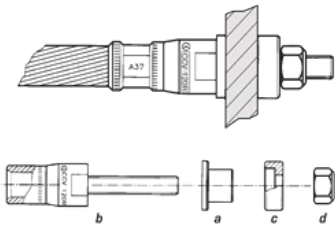
ELECTRICAL CONNECTION SYSTEMS TO RAILS CCV120R-60

Technical characteristics

PROPERTIES

Material (Body)

Electrolytic copper



ELECTRICAL CONNECTION SYSTEMS TO RAILS

CCV120R-60