

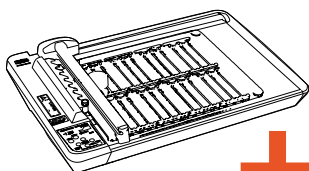
PLOT SYSTEM

Installing the Graphtec MP303-04 plotter on Windows XP (SP2)

Read the Installation and Maintenance Manual before commencing this procedure

SYSTEM REQUIREMENTS

- PC-Pentium II, equivalent or above
- 128 Mb RAM
- USB and parallel Connection
- 30 Mb di spazio disponibile su HD
- Video resolution 800x600
- CD drive
- Facility to receive software updates by connecting directly to www.cembre.com or via network or portable memory device



Graphtec MP303-04 plotter and PS-PLT template



To ensure the correct installation of Graphtec plotter proceed carefully as follow:

- 1 Software installation
- 2 Driver installation
- 3 Driver configuration
- 4 Plot Advance Program configuration
- 5 Graphtec plotter setting

cont. ➡



Cembre S.p.A.

Tel: +39 030 36921
info@cembre.com

Cembre Ltd.

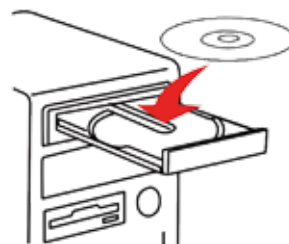
Tel: 01675 470440
sales@cembre.co.uk

Cembre Inc.

Tel: (732) 225-7415
Sales.US@cembreinc.com

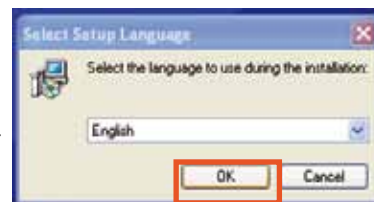
1

Software installation



DO NOT CONNECT THE PLOTTER YET

Insert the CD into the computer. Wait a few seconds. The installation procedure will be launched automatically.



In the language selection window, click **OK**



In the first window, Click **Next**



Tick only **Plot Advance**

Click **Next**



Click **Install**

Continue the wizard until program installation is completed.



If this message appears during installation click **Yes**



When installation is completed, the Plot Advance icon will appear on the desktop.



REMOVE THE CD

2 Driver installation

Install the plotter on a horizontal surface.
The driver installation procedure differs depending whether the plotter is connected with the parallel or USB cable.



PLOTTER INSTALLATION WITH PARALLEL CABLE

Connect the plotter to the computer using the parallel cable.

On the Windows task bar, select *Start*, then click the *Printers and Faxes* icon.



Alternatively, go to *Control Panel* and open *Printers and Faxes* by double clicking.



Click the *Add Printer* icon in the box on the left.
The printer wizard will be launched.



Click *Next*

Tick only the option: *Local printer connected to this computer.*



Click *Next*

Select the option: *Use the following port*



In the drop-down menu, select the port *LPT1*

Click *Next*

Click *Have Disk*



Click *Browse*

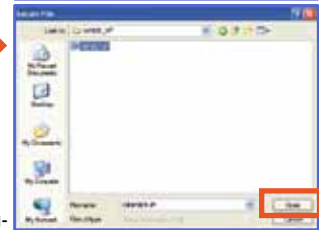


In *My Computer* select the following location:

- ◆ C:\
- ◆ Program files\
- ◆ Plot Advance\
- ◆ Driver\
- ◆ MP303-04\
- ◆ WIN2K_XP\



Select the file *OEMSETUP.inf* then click *Open*

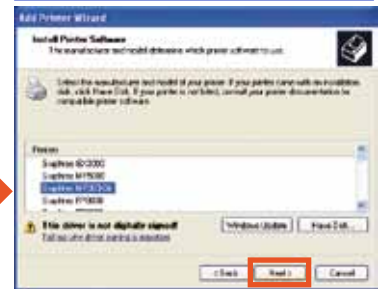


The installation location selected is indicated in the field alongside *Browse*.



Click *OK*

Select the plotter model from the list *Graphtec MP303-04*



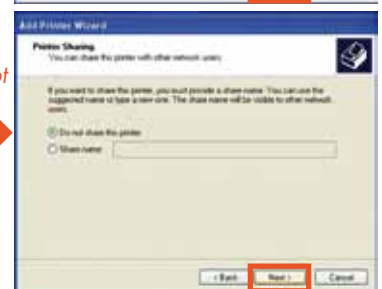
Click *Next*

Name the printer (default: *Graphtec MP303-04*)
Do you want to use this printer as the default printer? Select option: *No*



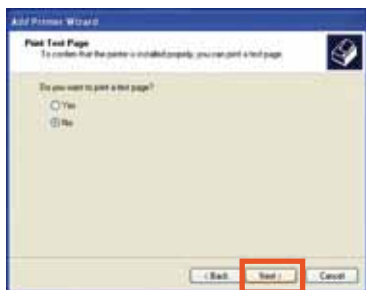
Click *Next*

Select option: *Do not share this printer*



Click *Next*

Do you want to print a test page? Select option: **No**



Click **Next**

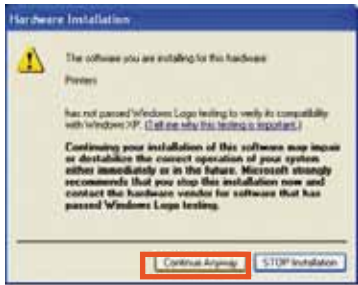
Complete the printer wizard by clicking **Finish**



Windows XP runs a compatibility check between the driver being installed and the operating system. This alarm message is normal and should be ignored. Click

Continue Anyway to complete the installation process.

After a few seconds, the Graphtec MP303-04 icon will appear in the **Printers and Faxes** window.

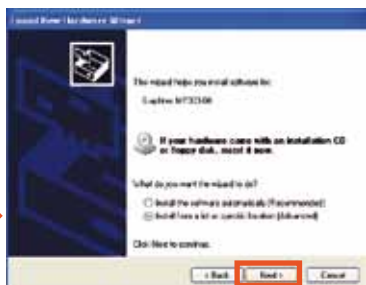


PRINTER INSTALLATION WITH USB CABLE

Connect the plotter to the computer using the USB cable. Turn the plotter on at the main switch on the side. The operating system will detect the presence of the new hardware connected.

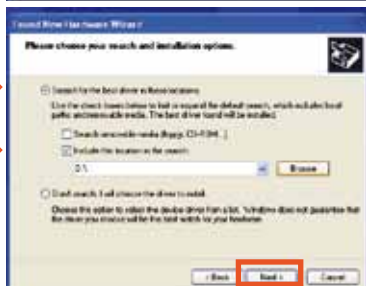
Wait for the **Found New Hardware Wizard** to be launched.

Select option: **Install from a list or specific location (Advanced)**



Click **Next**

Tick option: **Search for the best driver available in these locations** and the following option: **Include this location in the search:** Click **Browse**



Click **Browse**

In **My Computer** select the following location:

- ◆ C:\
- ◆ Program files\
- ◆ Plot Advance\
- ◆ Driver\
- ◆ MP303-04\
- ◆ WIN2K_XP\

Select folder **WIN2K_XP** then click **OK**

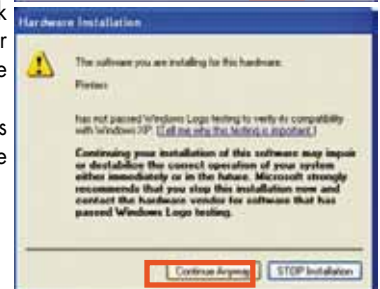


The installation location selected is indicated in the field alongside **Browse**.

Click **Next**

Windows XP runs a compatibility check between the driver being installed and the operating system. This alarm message is normal and should be ignored. Click

Continue Anyway



If this window requesting the file 'MP303.GPD' appears, proceed as follows. Click **Browse...**



Select the same driver location, as follows:

- ◆ C:\
- ◆ Program files\
- ◆ Plot Advance\
- ◆ Driver\
- ◆ MP303-04\
- ◆ WIN2K_XP\

Select file **MP303.GPD**

Click **Open**



The installation location selected is indicated in the field alongside **Browse**. Click **OK**



Complete the new hardware wizard by clicking **Finish**. After a few seconds, the Graphtec MP303-04 icon will appear in the **Printers and Faxes** window.



3

Driver configuration

When installation is completed, the plotter will need to be configured.

The printer just installed will now feature in the *Printers and Faxes* folder in Windows.

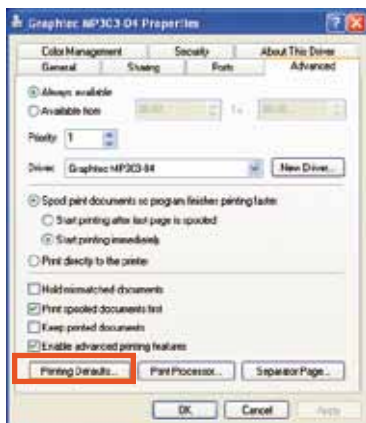
Right click on the Graphtec MP303-04 plotter icon and select *Properties* in the drop-down menu.



Click *Advanced* tab



Click *Printing Defaults...*



DEFAULT PRINTER SETTINGS

Click *Paper* tab, set the field values as follows:

- Paper Source:** *Cut Paper*
- Paper Size:** *Free Size*
- Plot Area:** *450x297mm*
- Margin:** *Enhanced*
- Rotated:** *0*
- Orientation:** *Landscape*
- Unit:** *mm*



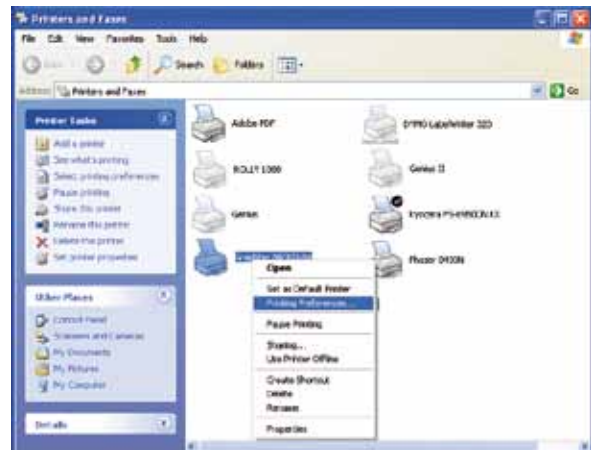
Click *Options* tab.

Set **Step Size** property: *0.025 mm*

Click *OK* in all open windows to confirm the new settings and return to *Printers and Faxes*



Right click on the **Graphtec MP303-04** plotter icon and select *Printing Preferences...* in the drop-down menu



In the *Printing Preferences* window, repeat as in **DEFAULT PRINTER SETTINGS** above.

Click *OK* to confirm the new settings and return to *Printers and Faxes*.



Right click on the **Graphtec MP303-04** plotter icon and select *Set as Default Printer* in the drop-down menu. After printing with Plot Advance for the first time, re-set the printer usually used for documents as the default printer.

4 Plot Advance Program configuration

When the plotter is installed, the Plot Advance program will need to be configured.

Launch Plot Advance by double clicking the program icon on your desktop. The first time the program is launched, it will give this warning:



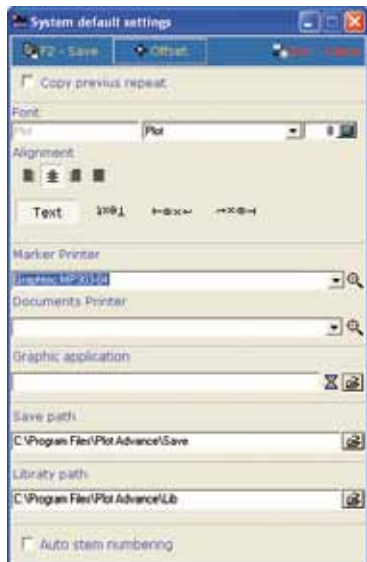
Click **OK**

In the first window, click the **Utility** menu then **Compile favorites...**



Marker the field values as follows. In **Printer** select the **Graphtec MP303-04** plotter. In **Document Printer** select the printer usually used for documents.

Then click **Offset**



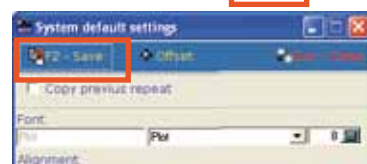
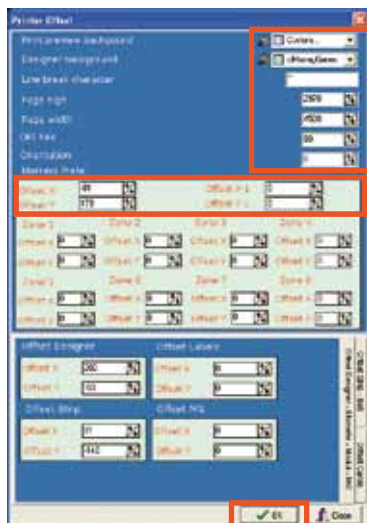
Set the field values as follows.

To centralise printing on the media, insert the values on the enclosed test sheet for **Offset X, Offset Y, Offset X 1 and Offset Y 1**.

These values are indicative and should subsequently be modified by printing a few test media.

Click **OK**.

Click **F2 - Save** to save the settings and confirm by clicking **Yes**.



5 Graphtec plotter setting

Turn the plotter on then press **CHART HOLD**.

The display indicates **Ready**, and the plotter is ready to operate.

The **Graphtec MP303-04** plotter is factory set by Cembre. Check the following settings only in the event of a plotter malfunction.

Press **MODE** to enter the settings menu.

Pen Type Manual I. should be displayed.

If another type of pen is set, press **←** or **→** until the display shows

Pen Type Manual I.

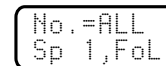
Press **ENTER** to modify the pen settings.

Press **▲** or **▼** to select the pen to be modified.

Press **←** or **→** to modify the speed of the pen.

Press **MODE** to modify the pen pressure.

Correct pen settings are:



Having checked these parameters, press **ENTER**.

Pen Type Manual I. is displayed.

Press **▲** to browse the menu.

Setup DipSW. is displayed.

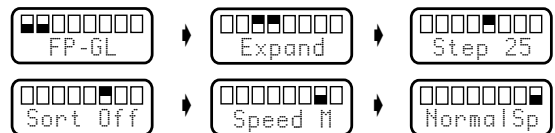
Press **ENTER** to modify the print settings.

The first line of the display is a graphic representation of the switches (i.e. the print options), and the second line the value of the switch being modified.

Press **←** or **→** to select the switch to be modified.

Press **▲** or **▼** to modify the switch value.

Correct switch settings are:



Having checked these parameters, press **ENTER**.

If modifications have been made, the display shows **Reset? ENTOrCAN.**

Press **ENTER** to confirm and save the new settings.

If no modifications have been made, the display shows

Setup DipSW.

Press **MODE** to exit the settings menu.

The plotter returns to **Ready** and is ready for use.