


## CEMBRE MACHINE FOR PANDROL CLIPS PCMD

- > Cembre machine for Pandrol clips is robustly capable of lifting sleepers to assist E, FC, FE and FCX clip insertion.
- > A completely re-engineered petrol-powered Pump unit and control system featuring automatic acceleration to increase power output only when required, thereby reducing HAV, noise and fuel consumption.
- > Machine settings are achieved without tools and rear arms have protection against damage with adjustable gas springs for assured machine lifting in all weather.
- > Improved machine ergonomics, access to controls and powerful LED lighting of the working area.
- > A folding operating handle to reduce the risk of transportation damage.
- > **Performance**  
Simple to use with simultaneous insertion or extraction of both clips by two independent clamps, promoting operator confidence and rapid progress.
- > **Control panel**  
The operator can easily access all the controls of the unit.
- > **Braking system**  
PCMD meets the requirements of EN13977.
- > **OLED Display**  
OLED Display of number of operations, service recommended and warnings.
- > **3rd Wheel Bar**  
3rd Wheel Bar designed for use on 3rd rail systems.
- > **Track under construction**  
Undesirable movement of sleepers, where ballast is not yet in situ, is avoided due to the reciprocal independence of the clamps, enabling work to be carried out during rail setting.



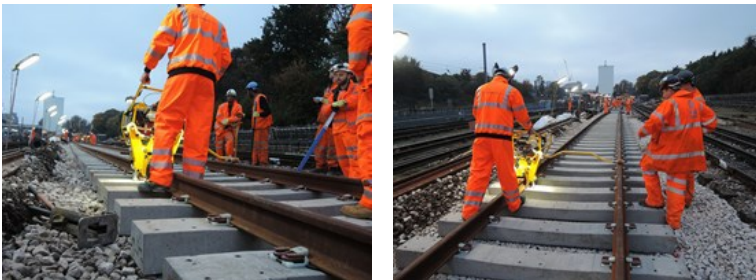
CERTIFICATES 

 EN 13977

# CEMBRE MACHINE FOR PANDROL CLIPS **PCMD**

## *Technical characteristics*

|                     |   |
|---------------------|---|
| Engine Type         | Combustion: 4-stroke, overhead valve, single cylinder |
| Displacement        | 196 cm <sup>3</sup>                                   |
| Motor power         | 5.6 HP  |
| Motor power         | 4.1 kW  |
| RPM (to the minute) | 3600 rpm  |
| Fuel                | Unleaded regular grade Petrol                         |
| Fuel tank capacity  | 3.1 l   |
| Start               | By rope pull with automatic rewind                    |



# CEMBRE MACHINE FOR PANDROL CLIPS **PCMD**

## *List of products*

| <b>PCMD</b> |                 |         |         |         |        |
|-------------|-----------------|---------|---------|---------|--------|
| Type        | Force developed | Height  | Length  | Width   | Weight |
| PCMD-EC     | 40 kN           | 1025 mm | 1750 mm | 1985 mm | 128 kg |
| PCMD-FC     | 40 kN           | 1085 mm | 1750 mm | 1892 mm | 143 kg |