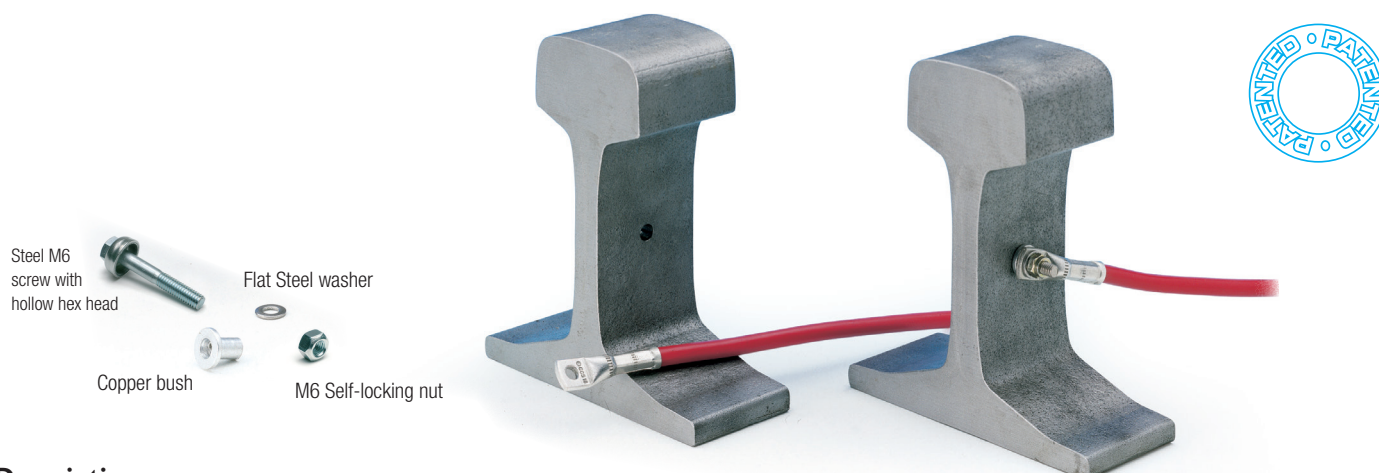


RAIL WEB PERMANENT ELECTRICAL CONTACT TYPE AR 67 FOR SIGNALLING DEVICES for hole diameter 8 - 8,5 mm



Description:

This unique system was designed and developed by Cembre in 1988 following a review of existing electrical connection systems.

The aim of the Cembre system is to provide a low resistance interface between the rail web and the terminal lug.

Following in-depth testing in the laboratory and extensive field trials, the system has been recognised and approved for total reliability.

- low electrical resistance (microhm)
- simple to install, not dependent on operator skill level
- quick and easy to install (less than one minute)
- easy to connect/disconnect cables, for fault finding

Rail web cable connection applications:

- Traction return bonding
- Continuity bonding
- Signal track circuit connection
- Ground bonding

AR 67 Connecting scheme

System components:

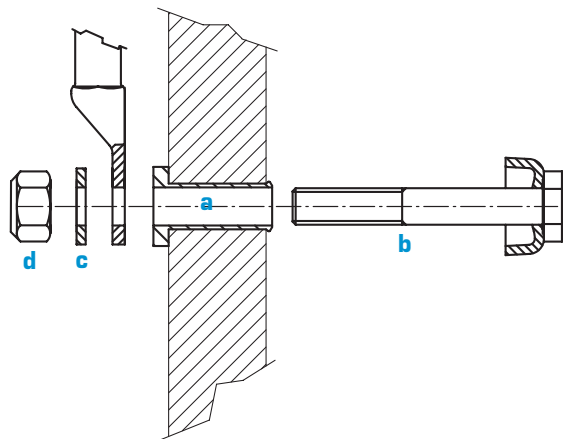
- a** – Copper bush type **AR 67-I** protected on surface by suitable metal plating
- b** – Steel **M6** screw with hollow hex head
- c** – Flat Steel washer
- d** – **M6** self-locking nut

Materials:

- **AR 67-I**, Cu-OF, copper CW008A according to UNI EN 13600:2003
- **AR 67-3X** Stainless steel A4-80, zinc. plated thickness 7-12 µm;
Cup flange Stainless steel X2CrNi19-11 / AISI 304L
- **M6 washer Ø 13x24** Stainless steel A2
- **M6 self-lock nut** Stainless steel A3P (Ebs 20.20.26)

Railweb thickness: **AR 67:** 14 to 16,5 mm

Hole diameter: 8 mm



To be installed by:

- **HTEP hydraulic tool + KIT AR67 INST installation Kit**
- **RHTEP head for connection to a hydraulic pump + KIT AR67 INST installation Kit**
- **MTEI hand held ratchet tool**

Cembre SpA

Via Serenissima, 9 - 25135 Brescia (Italy)

Tel.: +39 030 36921 - Fax: +39 030 3365766

Web: www.cembre.com - Email: info@cembre.com

Prepared by: Marketing dept.

Date: 27/10/2016